

# KENSINGTON

## AT WOODFIELD COUNTRY CLUB

IN PART OF SECTION 4, TOWNSHIP 47 SOUTH, RANGE 42 EAST  
CITY OF BOCA RATON, PALM BEACH COUNTY, FLORIDA

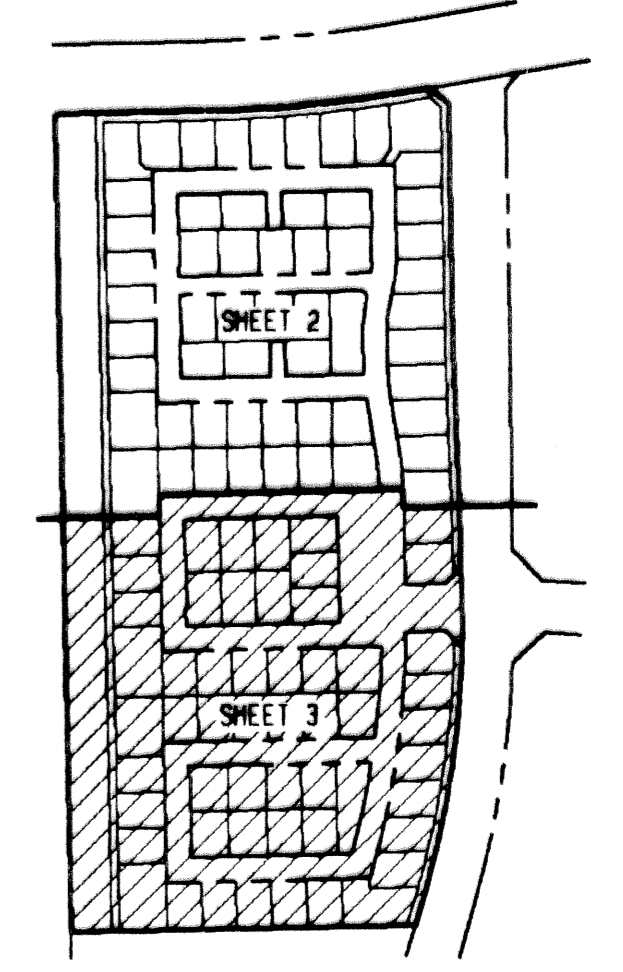
SHEET NO. 3 OF 3

GEE & JENSON  
ENGINEERS - ARCHITECTS - PLANNERS, INC.  
WEST PALM BEACH, FLORIDA  
JANUARY 1994

40 0 40 80  
SCALE IN FEET SCALE 1" = 40'

# 156

STATE OF FLORIDA  
COUNTY OF PALM BEACH  
This plat was filed for  
record at \_\_\_\_\_ this \_\_\_\_\_ day  
of \_\_\_\_\_ 1994, and duly  
recorded in Plat Book No. \_\_\_\_\_  
on Pages \_\_\_\_\_ thru \_\_\_\_\_  
DOROTHY WILKEN  
Clerk Circuit Court  
By \_\_\_\_\_ D.C.



SUBDIVISION # CC  
 BOOK 73  
 FLOOD ZONE  
 QUAD #  
 SE  
 ROAD NAME  
 4/27/94  
 C/BOCA

COMPUTED D. BACHOR  
 DRAWN D. BACHOR  
 CHECKED \_\_\_\_\_  
 APPROVED \_\_\_\_\_  
 JOB NO. 93-330

NOTE:  
LOT LINES ARE NOT RADIAL  
UNLESS OTHERWISE NOTED.

Curve #	Radius	Delta	Length	Tangent	Chord/Brg
C15	1362.00'	17°17'33"	408.05'	205.59'	406.50' S07-37-50.0W
C16	1362.00'	1°51'36"	43.89'	21.95'	43.89' N00-05-08.0E
C17	1362.00'	7°37'43"	180.01'	90.14'	179.86' S04-39-31.8W
C18	1362.00'	7°48'14"	184.15'	92.21'	184.00' S12-22-30.3W

DIGICAD FILE: PAR-1.P3 1-24-1994 7:18am